

# MAP Guidance Phase 3

April 30, 2024

In-Person Meeting

# Overall Update

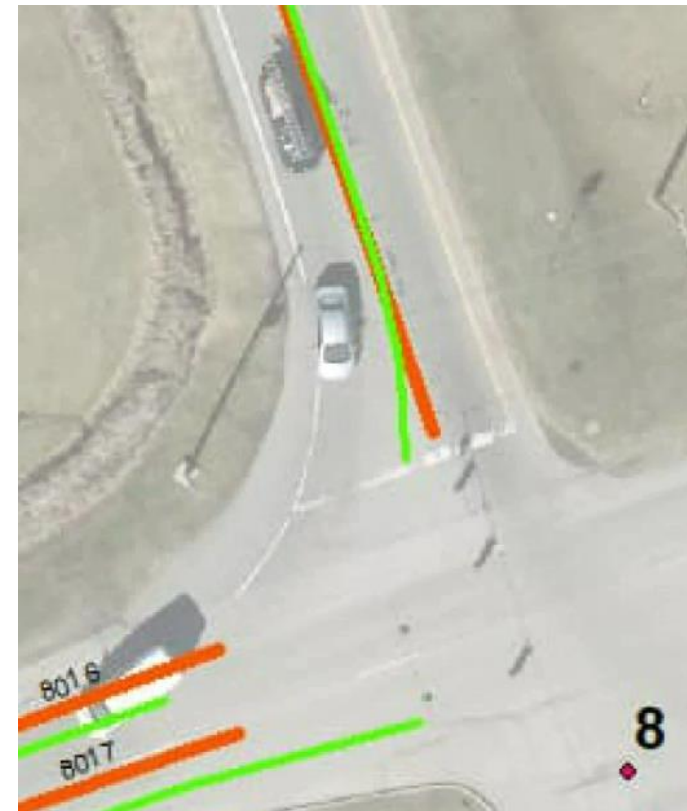
- Mostly Pausing Project Efforts until Summer/Fall
  - Expecting more input from connected intersection deployments
- Sent MAP Guidance Revision #3 to panelists for review

# Looking Ahead

- More information from UDOT SMART Grant effort on tools and approach developed for validation MAP messages
  - CAMP is developing and testing a proposed approach in Michigan and Utah
  - Would have agency procure and conduct a LIDAR scan of the intersection from available vendors
  - Collected data would be uploaded to a tool that compares it with the intersection MAP message

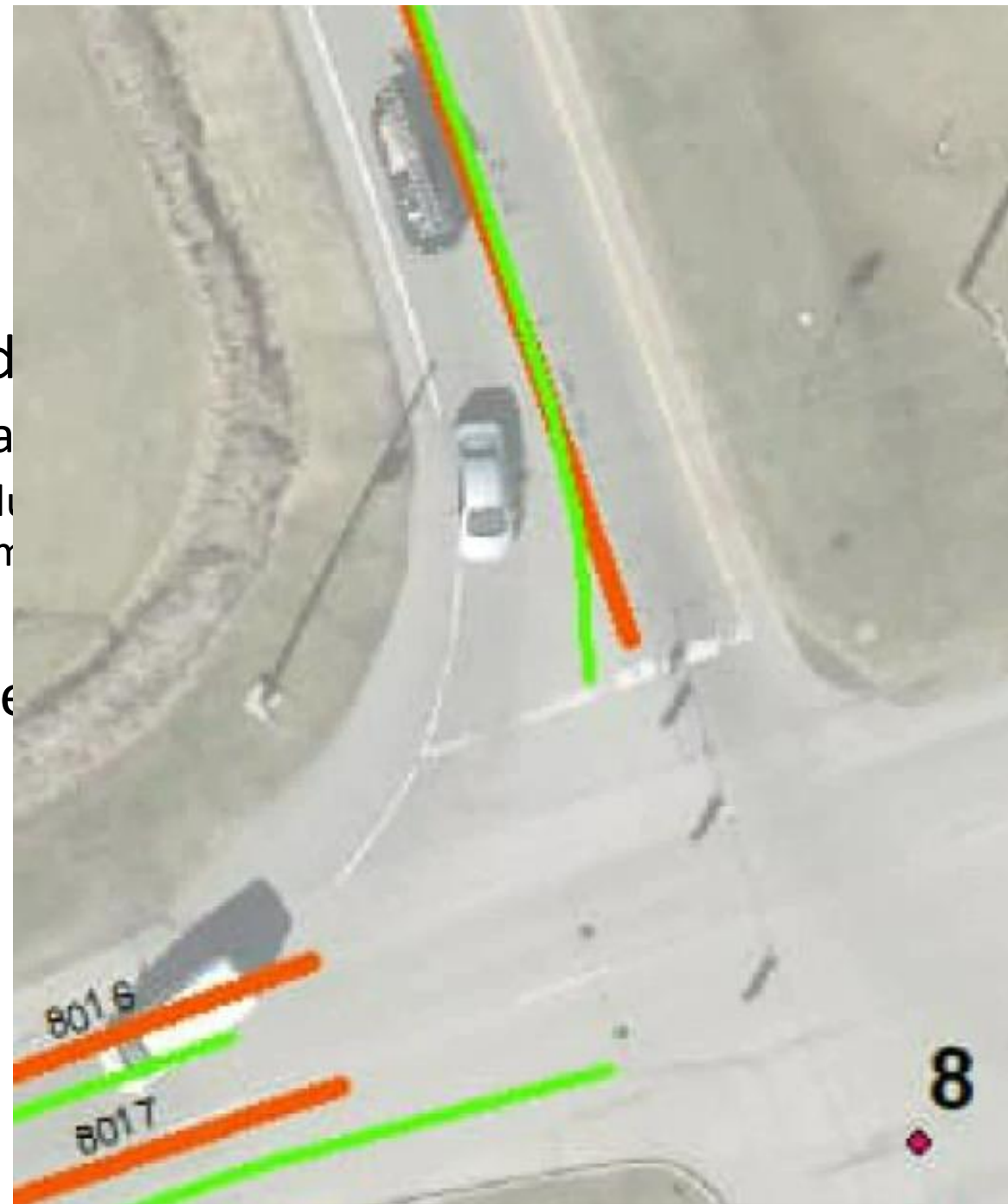
# Looking Ahead

- CTI 4501 v02 expected to be released soon
  - Several updates and revisions may impact the MAP Guidance
    - e.g., walkthrough of draft CTI 4501 v02 included a new requirement that lane width changes  $>0.2\text{m}$  requiring a node
- More agency experiences CV PFS CI testing
  - Node placement for crosswalk lanes
  - Clarify node placement for “centerline” of a lane
- Other items that may arise



# Looking Ahead

- CTI 4501 v02 expected to be released
  - Several updates and revisions may impact
    - e.g., walkthrough of draft CTI 4501 v02 includes requirement that lane width changes  $>0.2m$
- More agency experiences CV PFS CI tests
  - Node placement for crosswalk lanes
  - Clarify node placement for “centerline”
- Other items that may arise



# MAP Guidance Phase 3 Schedule

Task  
2

