

Connected Vehicle Pooled Fund

David Karnes

Bureau of Traffic Operations

Madison, WI

April 30, 2024



Madison Facts

- State capital
- 272,903 city
- 680,796 metro
- University of Wisconsin
- Built on an isthmus



University of Wisconsin

- Founded in 1848
- Around 50,000 students
- Home of the UW Traffic Operations and Safety Lab

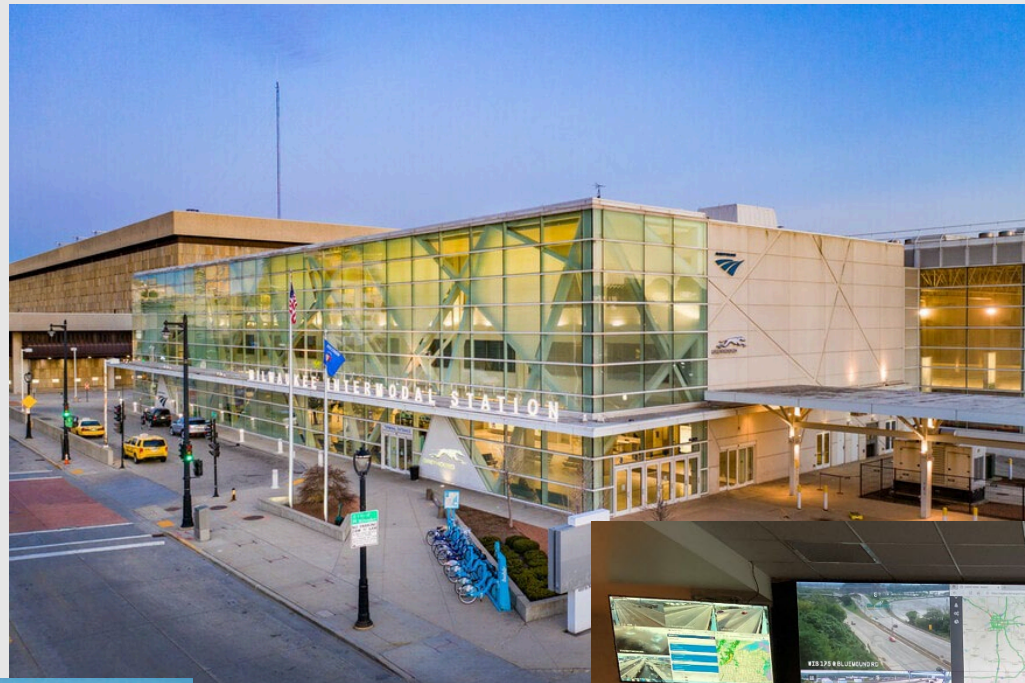


All images by Continuum SmithGroup.
Artist's concepts of the new building.

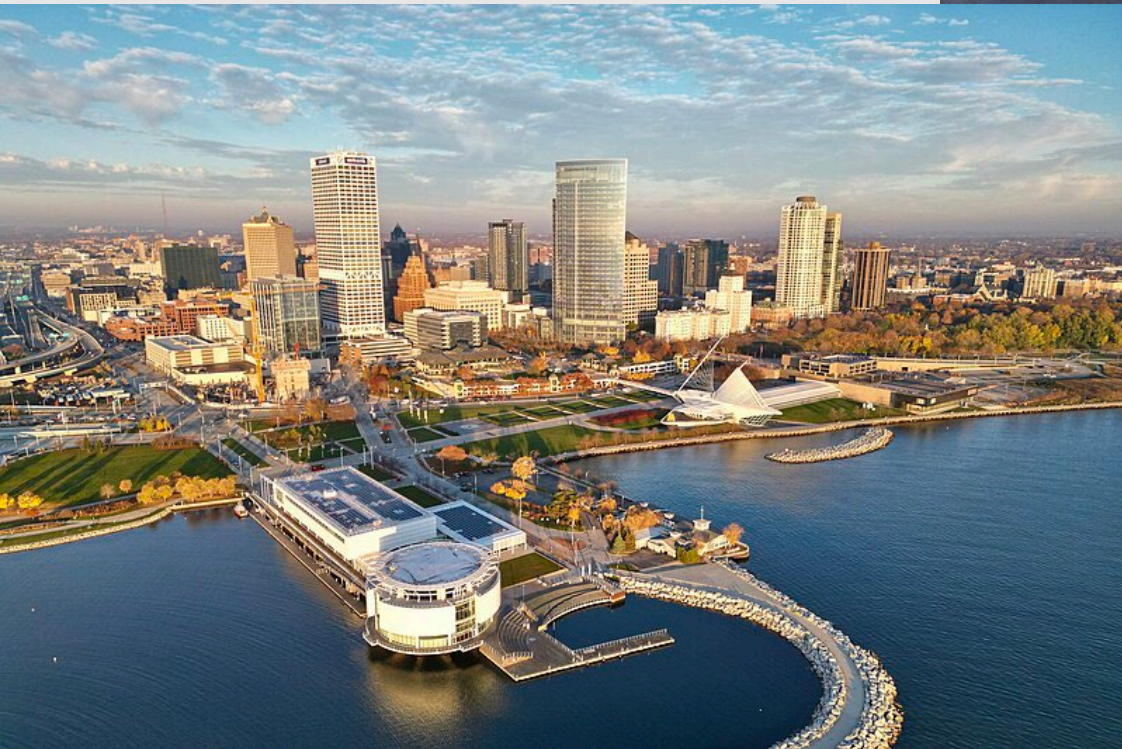


WISCONSIN TRAFFIC MANAGEMENT CENTER

Milwaukee



Milwaukee Intermodal Station
433 W St. Paul Ave, third floor
Milwaukee, WI



TMC Control Room



Wisconsin fun facts

- Wisconsin is America's Dairy Land, home to nearly a quarter of the total dairy farms, 90% of the milk is made into cheese, producing around 2.8 billion pounds of cheese per year
- Wisconsin also leads the country in Cranberry and Ginseng production
- Wisconsin has around 15,000 lakes (sorry Minnesota)
- Wisconsin is home to the Green Bay Packers, a publicly owned, non-profit corporation since 1923. My family is a shareholder, so that technically makes me an NFL owner
- The City of Milwaukee elected socialist mayors from 1910-1960
- Ripon is the birthplace of the republican party
- The first Kindergarten classes in the US were held in Watertown in 1856
- The first ice cream sundae was served in Two Rivers
- Barbie is said to be from fictional Willows, WI

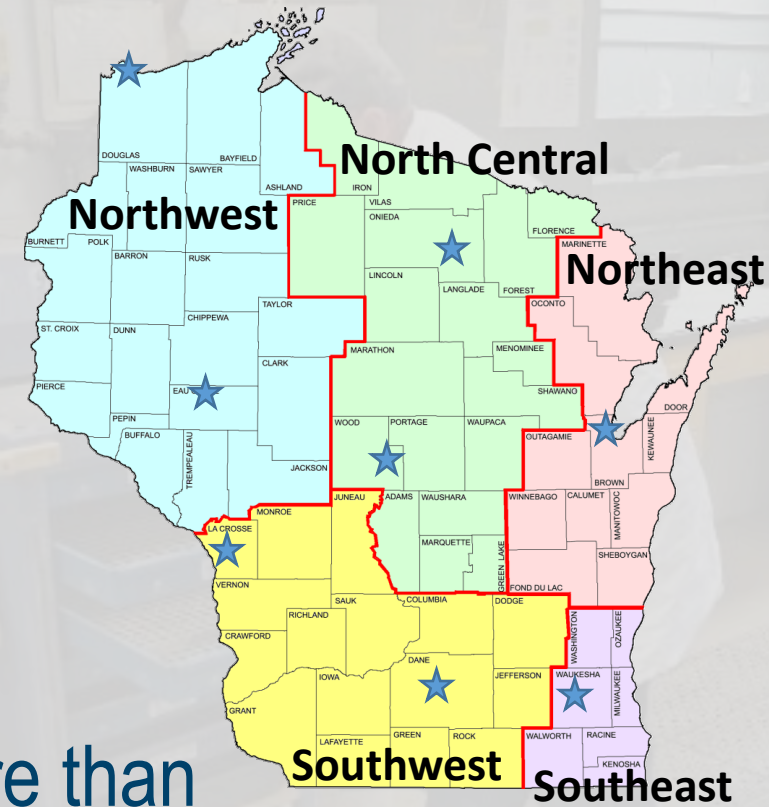
What is WisDOT?

- More than 3,500 employees working across six divisions
 - DTSD, DTIM, DSP, DBM, DBSI
- Biennial budget of more than \$8 billion
- Roughly 300-350 improvement projects annually
- State highway system is approximately 11,700 miles
- More than 14,000 bridges span state and local roadways.



Who is DTSD?

public_outreach
communications
labor_compliance
materials real_estate
planning
traffic environmental railroad_coordination
permits mapping
access structures
operations db_e construction
engineering pavements
utilities soils maintenance
finance surveys
electrical
administration



More than
1,360 employees in a wide
variety of disciplines



BTO Organizational Structure

Bureau of Traffic Operations

Anne Reshadi, Director



Traffic Systems & Management Section [David Karnes]

- Traffic Ops Applications



Traffic Engineering & Safety Section [Bill McNary]

- Finance
- Policy Administrative Support



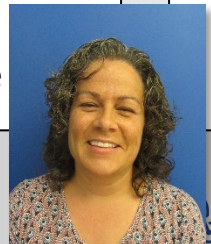
Traffic Management Unit [Christopher Hager]

- TMC Control Room
- Freeway Operations
- Active Traffic Management
- Flex Lane Operations
- Freeway Service Team
- Traveler Information
- IT



Traffic Systems Unit [Elizabeth Lloyd-Weis]

- Traffic Signal Systems
- Highway Lighting
- ITS Planning/Design
- Electrical Standards, System Maintenance
- ITS Net
- TSMO Infrastructure Planning
- CV infrastructure



Traffic Analysis & Safety Unit [Brian Porter]

- Traffic Safety Engineering
- Traffic Engineering & Speed Management
- Traffic Analysis & Modeling
- ETO
- TIME

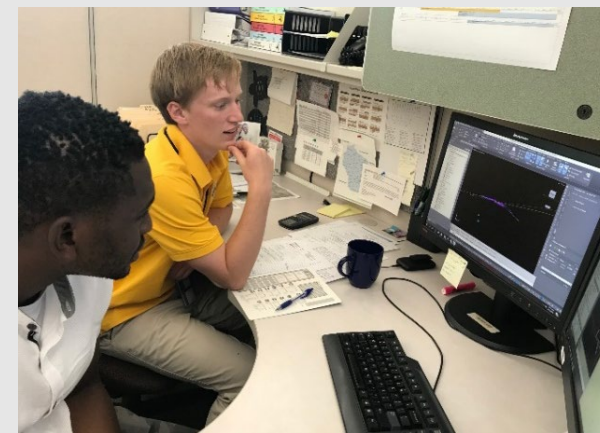
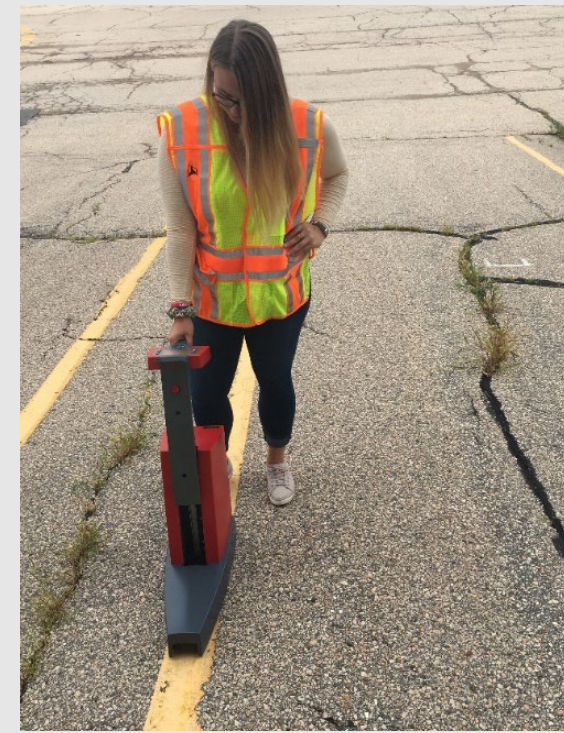


Traffic Design Unit [Matt Rauch]

- Signing
- Pavement Marking
- Work Zone



Who are we?



Who are we?

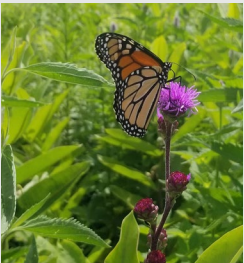


Image citations

Slide 2

Wisconsin map – WorldAtlas.com

Wisconsin's Driftless Area – Milwaukee Magazine <https://www.milwaukeeemag.com/15-reasons-why-you-should-visit-wisconsins-driftless-area/>

Apostle Islands – National Park Service <https://www.nps.gov/apis/learn/nature/geologicformations.htm>

Carpenter Lake - David Karnes

Peninsula State Park - Door County Pulse <https://doorcountypulse.com/the-park/>

Slide 3

Top aerial view of Madison – University of Wisconsin <https://gradlife.wisc.edu/>

Bottom left aerial view of Madison – BizJournals Milwaukee <https://www.bizjournals.com/milwaukee/news/2016/04/20/madison-city-council-picks-beitlers-170-million.html>

Bottom right view of State Street – National Trust - <https://savingplaces.org/stories/travel-itinerary-madison-wisconsin>

Slide 4

Camp Randall – University of Wisconsin uwbadgers.com

Proposed Engineering Hall – University of Wisconsin <https://engineering.wisc.edu/news/wisconsin-approves-new-uw-madison-engineering-building/>

Bascom Hall – WPR - <https://www.wpr.org/education/uw-madison-flies-ho-chunk-nation-flag-atop-bascom-hall>

Slide 5

Milwaukee skyline photo by Isaac Rowlett https://en.m.wikipedia.org/wiki/File:Milwaukee_Skyline_2023.jpg

MIS and TMC Control room - WisDOT stock images

Remaining images courtesy of WisDOT

